

2016 St Mary School Cross Country Invitational Friday September 30th, 2016

Dear Coaches,

This year the St Mary School Invitational will be held Friday September 30th at **Palmer Park** in Janesville.

Palmer Park is located at East Racine Street and Palmer Drive on the East side of Janesville. It is across Racine Street from Blackhawk GC where the Midwest Invitational is held.

There is parking for cars across Mohawk drive in the various parking lots. Buses should park near the Tennis courts.

*We have a new race format this year and electronic timing so please pay close attention to the instructions!

* We will be using AccuRace Timing Services this year. Coaches will need to register their teams on DirectAthletics at www.directathletics.com, with an entry deadline set for Noon on Tuesday, September 27th.

The first race will begin at 4:30 pm. The order of the races will be:

4th, 5th, 6th Grade Boys- 1 Mile

4th, 5th, 6th Grade Girls- 1 Mile

7th, 8th Grade Boys -1.5 Miles

7th, 8th Grade Girls -1.5 Miles

Please remember that spikes are NOT allowed.

A map of the 1 mile and 1.5 mile courses is enclosed.

Runners will need to wear numbered bibs on the FRONT of their shirt. The bibs and pins will be provided to the coaches on race day. You do not need to notify us regarding runners that will not be at the race. **Please register new teams and make additions by Tuesday September 27**

We plan to hand out awards shortly upon conclusion of the meet. The top six runners in each grade will receive an award, and all runners will receive a participant ribbon. There will be concessions for sale near the start/finish area. Also new this year we will be selling custom t-shirts!

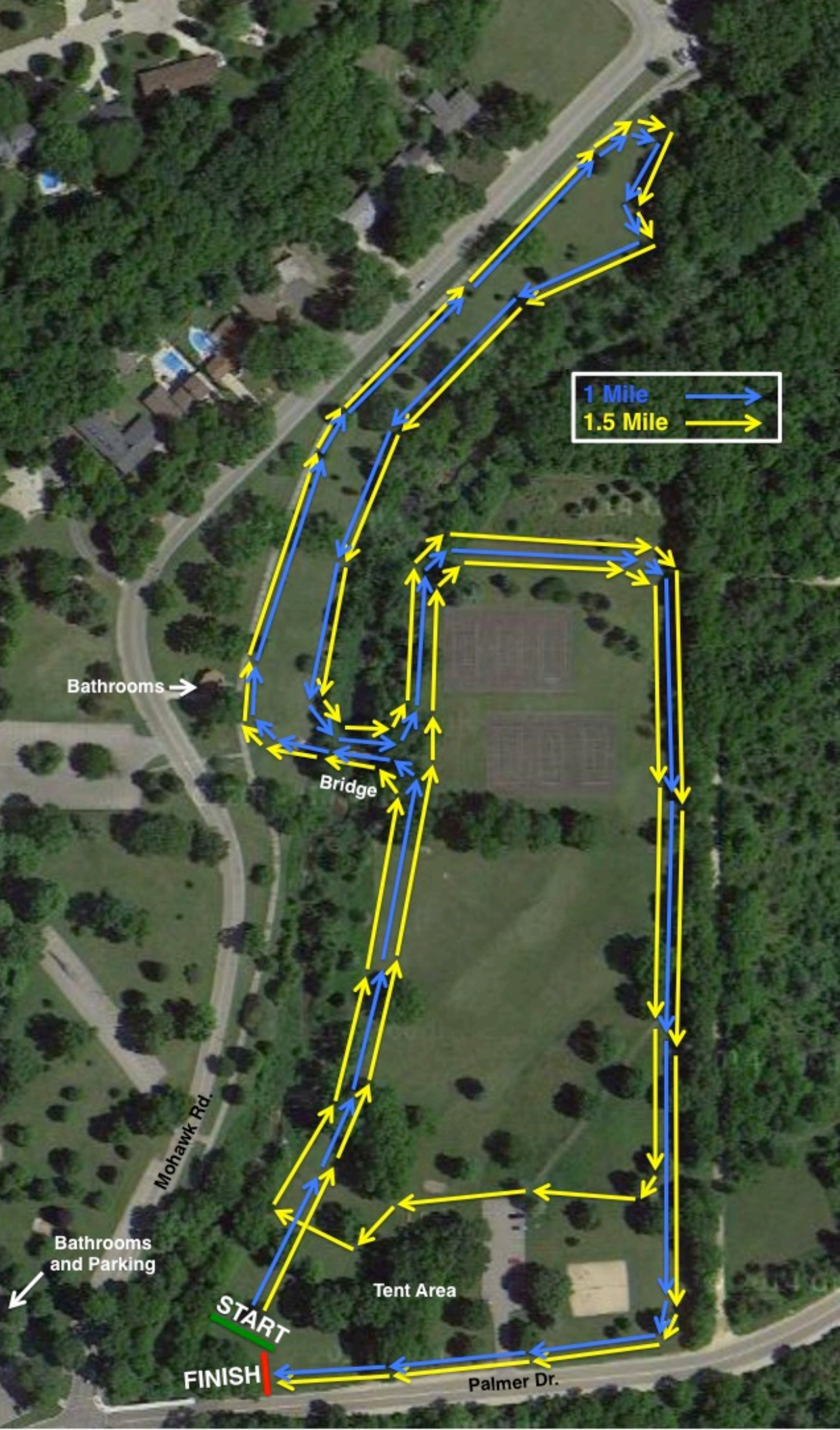
We look forward to seeing you all at our meet, good luck to your athletes!

Ric Meister 756-8583

rdmdds@yahoo.com

Andy White 756-5933

ytenfam@hotmail.com



1 Mile →
1.5 Mile →

Bathrooms →

Bridge

Mohawk Rd.

Bathrooms and Parking ↙

Tent Area

START

FINISH

Palmer Dr.