



22nd Annual Baertschi Invitational

Albany Athletic Department

Date: September 30th, 2014

To: Cross Country Coaches/ Athletic Directors of: Albany, Belleville, Beloit Turner, Boscobel, Brodhead/Juda, Clinton, Deerfield/Cambridge, Edgerton, Evansville, Holy Family, Iowa-Grant/Highland, Lancaster, Madison Country Day, Marshall, Monroe, Mt.Horeb, New Glarus/Monticello, Oregon, Pardeeville, Parkview, Pecatonica/Argyle, Platteville, Poynette, Rio/Fall River, St. Ambrose Academy, Southwestern/Cuba City, Stoughton, Tri-State Homeschool, Williams Bay, Wisconsin Heights/Barneveld

**From: Derik Doescher - AHS Athletic Director
Tony Brewer - AHS CC Coach**

Re: Baertschi Invitational

Dear Coach,

We are pleased that you and your teams have accepted the invitation to our 22nd Annual Baertschi Invitational. The meet will again be held at the Fred & Dorothy Baertschi/Scott & Jed Keepers property located one mile north of Albany on Dunphy Road on Saturday, October 11th, 2014. Please make sure that your HS & MS Cross Country Coaches read the directions for entries. MS entries must be complete by the same time as HS entries. No MS entries will be allowed on race day!

Time Schedule:

8:30 Coaches Meeting (Finish Line)
9:00 Girls Junior Varsity (5000M)
9:40 Boys Junior Varsity (5000M)
10:15 Girls Varsity (5000M)
10:50 Boys Varsity (5000M)
11:20 Middle School (3000M)
11:45 Open Race (5000M) Coaches, Parents, Fans, Etc.
12:15 Awards

Format:

In Varsity competition, you can run seven and score five. In Junior Varsity competition, you may have unlimited entries, but your top five will form your team score.

We are going to have two divisions in the Varsity competition this year. All teams will run together, we will then separate the small schools and large schools for awards.

Large School Division: Oregon, Stoughton, Monroe, Mt. Horeb, Edgerton, Deerfield/Cambridge, Evansville, Beloit Turner, Platteville, Southwestern/Cuba City, Brodhead/Juda, Clinton, New Glarus/Monticello, Marshall

Small School Division: Poynette, Wisconsin Heights/Barneveld, Rio/Fall River, Iowa-Grant/Highland, Lancaster, Parkview, Belleville, Pardeeville, Boscobel, Pecatonica/Argyle, Williams Bay, Albany, Madison Country Day School, St. Ambrose Academy, Tri-State Homeschool, Holy Family

Entries: PLEASE READ CAREFULLY!

Entries will be through DirectAthletics at www.directathletics.com.

Deadline for entries will be 8:00pm on Thursday, October 9th.

NOTE: MS Entries*We are using AccuRace Timing Services for our Middle School race this year. All entries have to be done by the same deadline as the high school.** Entries will be through DirectAthletics at www.directathletics.com.

Deadline for entries will be 8:00pm on Thursday, October 9th. We won't be able to enter MS runners on the day of the race so please make sure your MS Coaches have their runners entered by the deadline. No \$ fee for MS runners.

Entry Fee:

Please mail the entry fee, or bring it with you on the 11th if you haven't already paid. (\$60 per team or \$12 per individual not on a full team). \$120 total if you have a boys & girls team. No fee for MS runners.

Shirts:

Long and short sleeve shirts will be sold at the concession stand.

Facilities:

Port-a-potties will be available, but no locker room facilities are available.

Dogs:

No dogs are allowed at this Invitational unless being used for medical/disability reasons. For the safety of all please adhere to this rule!

Awards:

Varsity

Team: Plaque for top two teams (Large and Small school)
Medals for top team (7) (Both Divisions)
Individual: Medals for 1-15 (Large and Small School)

Junior Varsity

Team: Plaque for first place team
Individual: Medals for 1-10 in both races

Middle School

Medals for 1-5 for both boys & girls

Good luck and we look forward to seeing you on October 11th.

If you have any questions or concerns feel free to call Derik Doescher at (608) 862-3135 during the day, or Tony Brewer (608) 290-0078 at night.

Sincerely,

Derik Doescher, Athletic Director
Tony Brewer, Albany CC Coach

DIRECTIONS

From Madison - Take Park Street exit and go south on Hwy 14. Take the Hwy 138 exit in Oregon. Take a right on 138. Turn left on Cty MM between Kwik Trip and Stop-n-Go. Take Cty MM through Brooklyn. Once you have gone straight at the stop sign in Brooklyn, you will be on Hwy 104. Stay on 104 until you hit a stop sign, which will intersect on a curve with Hwy 59. Go straight at the stop sign ¼ mile, then take a right on Dunphy Road. (Road will be marked) The cross country course is approximately 3 miles on Dunphy Road on both sides of the road.

From Monroe -If you are traveling east on Hwy 11, take the Hwy 59 exit for Monroe. Take a left at the stop sign and follow Hwy 59 to Albany. Once you get to Albany, stay on Hwy 59 through Albany and take a left on Cty E (just past the Albany Mini-Mart). Stay on Cty E for one mile and turn right on Dunphy Road (Road will be marked). Course is on Dunphy Road approximately one mile.



ATTENTION COACHES

We're asking that you pass this note on to your runners, parents or any other spectators that will be attending the Baertschi Cross Country Meet on October 11th. Once again this year, spectator parking will be in a farm field near the Baertschi race course. Each year we run into situations where spectators drive newer/nice vehicles and don't want to park in that field. That is our only resort due to parking alongside the road is not allowed. Please pass this information on so that spectators understand that **ALL** spectator parking will be in a farming field.

Boys & Girls Course



mile 1

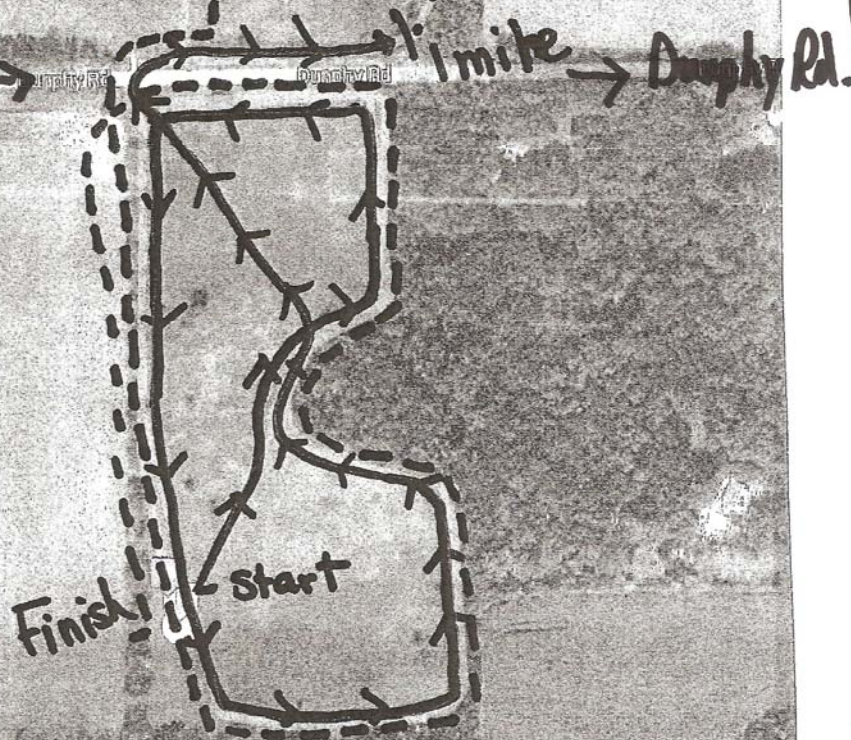


mile 2

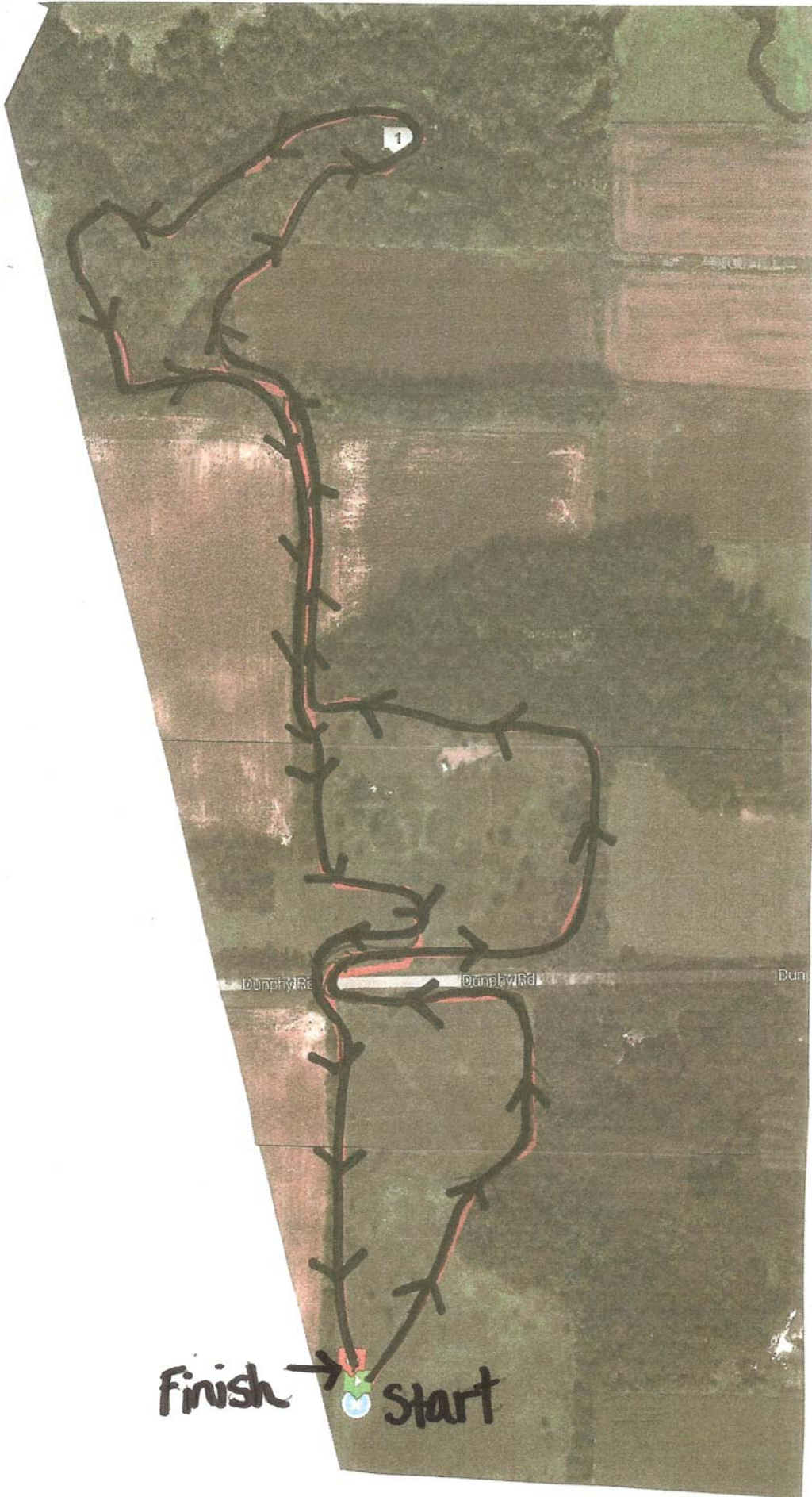


last 1.1

Duphy Rd. →



(5K)



Middle
School
Course
(3000M)